

KRONOS Sound Libraries EXs Expansion Samples



Owner's Manual



KARO Sound Development

EXs 165 KARO Modern Grand

Thank you for purchasing EXs165 Modern Grand for the Korg KRONOS.

Contents: Approximately 1.7 GB of PCM samples, 12 Stereo Multisamples, 16 Programs

The KARO Modern Grand contains a wide range of "futuristic sounding Grand Piano samples"

By combining these sounds you are able to produce a variety of film scores such as subtle piano sounds combined with pads.

EXs165 will be useful anywhere that you need extraordinary sounding Grand Piano that cover a futuristic touch.

This owner's manual explains how to install EXs165 on the KRONOS, how to load the samples, Programs and how to purchase an authorization code and authorize the library.

System requirements

To install EXs165, you'll need:

- KRONOS system version 3.0.4 or later
- Approximately 1.7 GB or more space on the internal disk

To load the sounds into memory, you'll need:

- Approximately 56 MB free RAM

3 GB of RAM recommended

KRONOS: The KRONOS is shipped from the factory with 2GB of memory. It is possible to load just EXs165 with the standard 2GB, but if you want to simultaneously use other EXs options in addition to the preload sounds, we recommend 3 GB of memory. Additional RAM should be installed by authorized Korg service centers only; for more information, see "Installing additional RAM" in the Sampling chapter of the Operation Guide.

KRONOS X: The KRONOS X is shipped from the factory with 3 GB of memory. It is not necessary to add more memory.

To confirm the amount of installed RAM:

- 1. Press the GLOBAL button to enter the Global mode.**
- 2. Go to the Options Info page.**
 - The amount of installed RAM is shown by the Memory parameter at the top-right of the display, in the System section.

Demo mode

Initially, EXs165 will be in demo mode. You'll be able to play, edit, and save Programs which use EXs165.

— but until you purchase an authorization code, their sound will fade out periodically. To purchase an authorization code, go to the online shop at <https://shop.korg.com/kronos/KARO>. For more information, see "Purchasing and authorizing EXs165" on page 12.

Preparations before installing

To install EXs165, you'll need KRONOS system version 3.0.4 or later, and at least 1.1 GB of free space on the internal disk.

To check the version of your KRONOS software:

1. Press the front panel GLOBAL button to enter Global mode.
2. Go to the Options Info page.

The version number is shown under "System" in the upper right-hand corner of the display.

3. Confirm that the version is 3.0.4 or later. If not, go to <https://shop.korg.com/kronosSupport> and download and install the latest system software.

To check the amount of free space on the internal disk:

1. Press the front panel DISK button to enter Disk mode.
2. Go to the Media Info page.
3. Set the Drive Select parameter to HDD: INTERNAL HD.
4. Confirm that the Free Size 1.1 (GB) or more. If not, please free up space on the disk by removing unnecessary data.

You can remove unwanted files from the disk by using the Utility page's Delete menu command. If you want to keep the files for your archives, you can use the Copy menu command to save them to an external USB storage device.

Installing EXs165

1. Un-zip the downloaded file.

Un-zipping the archive will result in a folder containing several different files and a sub-folder, as shown below.

EXs165 folder contents

| File/folder name | Notes |
|------------------|---|
| EXs165.exsins | These are data files used by the installer. |
| S165 | |
| EXs165.tar.gz | |
| EXs165.PCG | These files contain the Programs, (PCG). All of these are included in the installer, but are also provided separately for your convenience. |
| Manuals | This folder includes the manual that you're reading now, in English verion: EXs165_OM_E1.PDF |

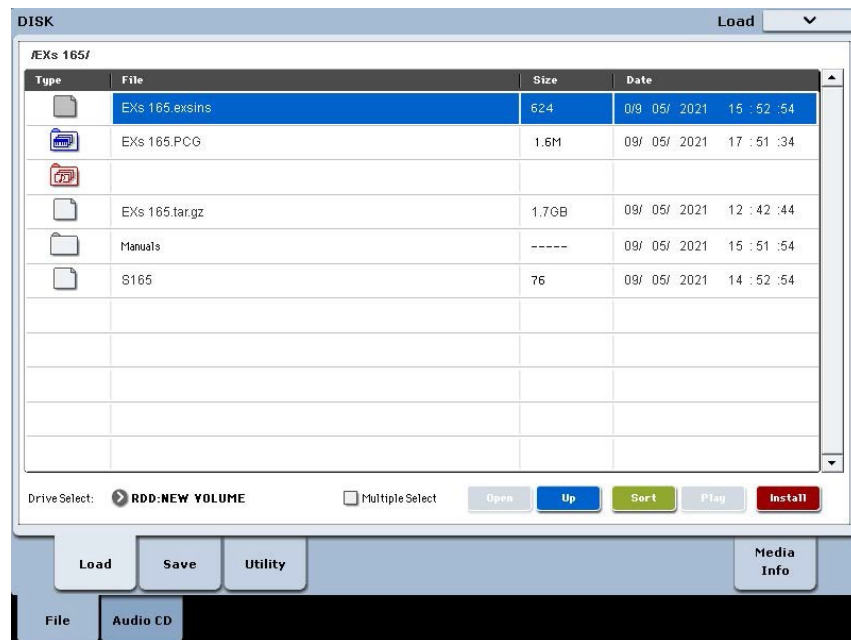
2. Copy the un-zipped EXs165 folder to a USB storage device, such as flash memory or a USB hard drive.
3. Safely disconnect the USB storage device from your computer.
4. Connect the USB storage device to one of the KRONOS's two USB A ports.

5. Press the DISK button to enter Disk mode.
6. Go to the Disk Utility page.
7. Using the Drive Select menu at the bottom of the page, select the USB storage device.

You may need to wait a few seconds after connecting the device before it is recognized.

8. Open the folder containing the EXs data from step 2.
9. Select the file EXs165.exsins.

The “exsins” suffix stands for “EXs INStaller.”



When an .exsins file is selected, the **Load** button changes to read **Install**. Only one EXs can be installed at a time. If **Multiple Select** is On, **Install** will be disabled.

10. Select **Install EXs** from the menu, or press the **Install** button.

The system will check to confirm that the installation files are valid, and that there is sufficient space on the SSD to install the EXs. Next, a dialog box will appear:



Found installer for: [EXs name]

Space required: [nnn] MB

SSD1: [disk name] [nnn] GB available

11. Press Install to continue with the installation.

The confirmation message “Are you sure?” will appear.

If you decide to cancel the installation, press the **Cancel** button.

12. Press OK to continue with the installation.

The installation will then begin. This may take a while; a progress bar shows the installation as it proceeds.

Next, the newly installed files will be verified. After the verification has completed successfully, the progress bar will disappear, and the installation is complete. The EXs sample data itself is installed on an invisible, protected part of the disk. To use the EXs, you’ll load its associated files, which will be installed into a new folder named EXs165 Modern Grand within the KARO Options folder, as shown below.

EXs165 Modern Grand folder contents

| File/folder name | Notes |
|------------------|--|
| EXs165.KSC | This is the KARO Sample Collection file, which lets you load all of the new samples at once. |
| EXs165.PCG | This file contains the new Programs. |

Note: EXs165.PCG is also included in the unzipped EXs165.zip file. There are identical to the installed EXs165.PCG. Use them as backups.

Error messages

When installing, error messages may be displayed to indicate problems, as described below.

“Error: invalid option file”

This means that the installation data is corrupted. Copy the file to the USB media again, or if that fails, download the data again.

“Error: not enough disk space for the installation”

This means that the internal disk is too full. Remove data from the disk, backing it up to USB media, in order to free up space.

Loading the new sounds and samples

- ⚠ Before loading, make sure to back up important data onto the internal disk or a USB storage device. When you load these files into memory, data previously stored in those locations will be overwritten.

Default load locations

By default, the Programs will be loaded into the following locations:

- Programs: U-G (HD-1) 000...15

If desired, they can be loaded into different locations as well.

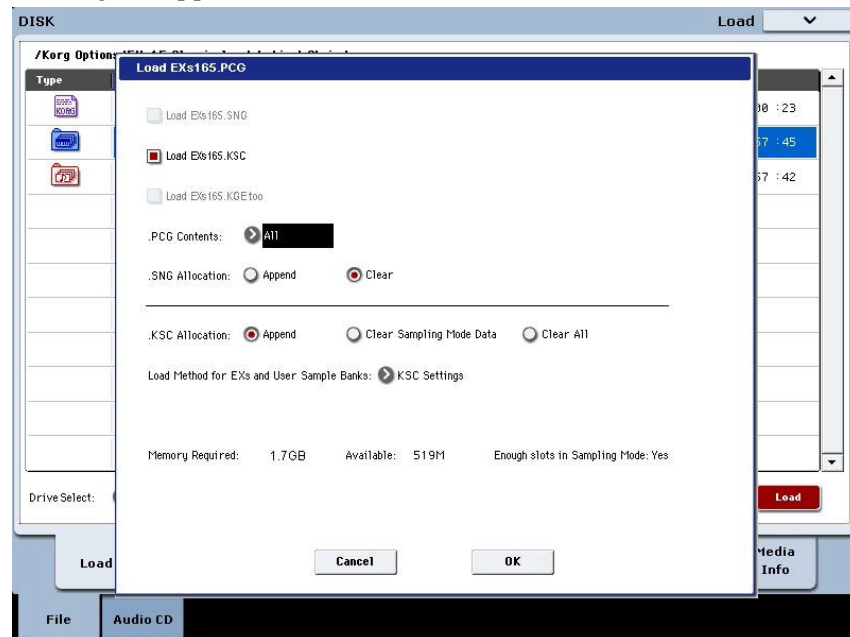
Loading the new sounds and samples

You can load the Programs and Samples into the default locations all at once.

To do so:

1. Go to the Disk Load page.
2. Set Drive Select to HDD: INTERNAL HD.
3. Select the KARO Options folder, and press Open.
4. Select the EXs165 Modern Grand folder, and press Open.
5. Select the file EXs165.PCG.
6. Press the Load button.

A dialog box appears.



7. Enable the check-box labeled Load EXs165.KSC. too.

This will load the samples along with the Programs.

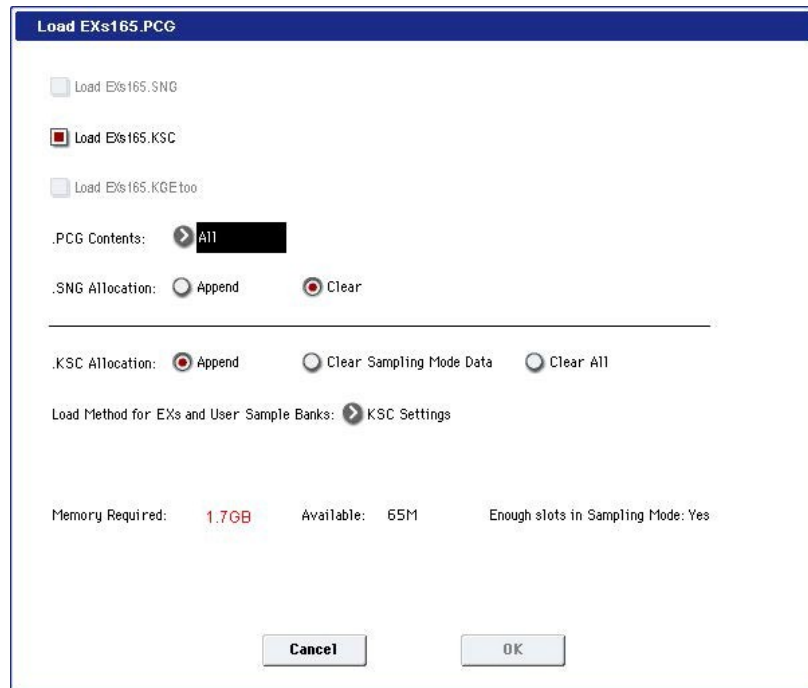
8. Set Select .KSC Allocation to Append, and Load Method to KSC Setting.

9. Leave the .PCG Contents parameter set to All.

Below the other parameters, you'll notice a status line showing the Memory Required and Available. (There's also info about whether or not there are enough slots, but this applies to RAM samples only.)

If the Available value is larger than Memory Required, the text will be in black, and you can proceed.

If the Available value is smaller than Memory Required, it will be shown in red characters. You can free up memory in several different ways; for more information, see "Making room in memory to load EXs165," below.



10. Press OK to load the data.

EXs165 will work in demo mode, fading in and out, until an authorization code is purchased and entered into the KRONOS. For more information, see "Purchasing and authorizing EXs165," below.

Making room in memory to load EXs165

If you've loaded additional EXs or Sampling Mode samples, there may not be enough space to load EXs165 at the same time.

To clear all Sampling Mode samples from within the Load dialog, you can set **Select .KSC Allocation to Clear Sampling Mode Data**. This will un-load all Sampling Mode samples, while leaving all EXs samples intact. Make sure that you've saved any edited Sampling Mode samples before doing this!

Alternatively, you can press the Cancel button and make more detailed changes to the loaded samples. For instance, you can go to the Global P0: Basic Setup-Sample Management page to un-load specific Sampling Mode or EXs samples.

Finally, you can revert back to the factory settings by doing the following:

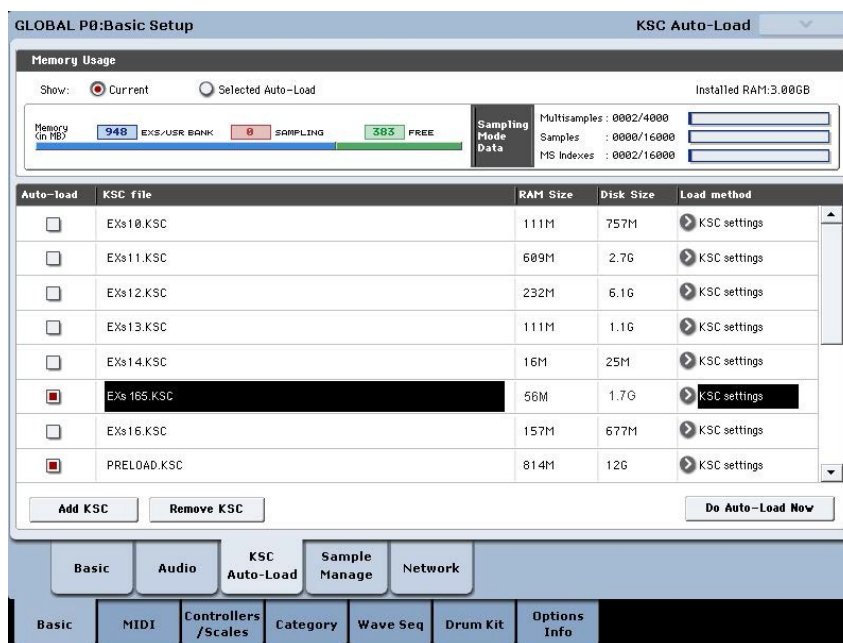
1. Go to the Global P0: Basic Setup-KSC Auto-Load page.
2. Un-check the Auto-Load buttons for all KSCs except for PRELOAD.KSC.
3. Press the Do Auto-Load Now button.

This will first un-load all Sampling Mode and EXs samples, and then revert back to the factory settings.

Automatically loading the EXs165 samples at startup

If you like, you can configure the KRONOS to automatically load the EXs165 samples at startup. To do so:

1. Press the GLOBAL button to enter Global mode.
2. Go to the Global Basic-KSC Auto-Load page.
3. In the list of KSCs, check the Auto-load box next to EXs165.KSC.

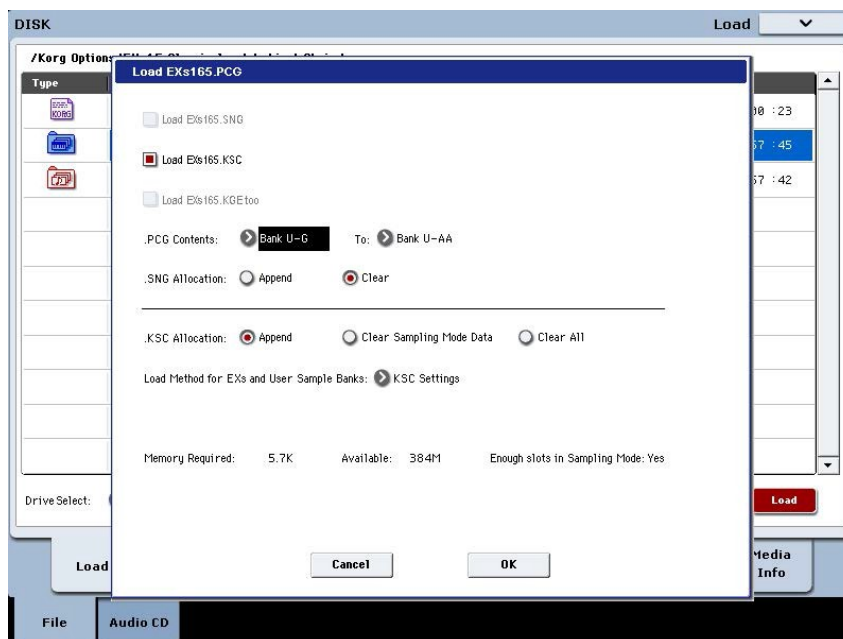


Loading the Programs into a different bank

1. Follow steps 1–10 under “Loading the new sounds and samples,” above.
2. Set the .PCG Contents parameter to Bank U-G.

To the right of this parameter, the To parameter will appear.

3. In the To parameter, select the bank to overwrite.

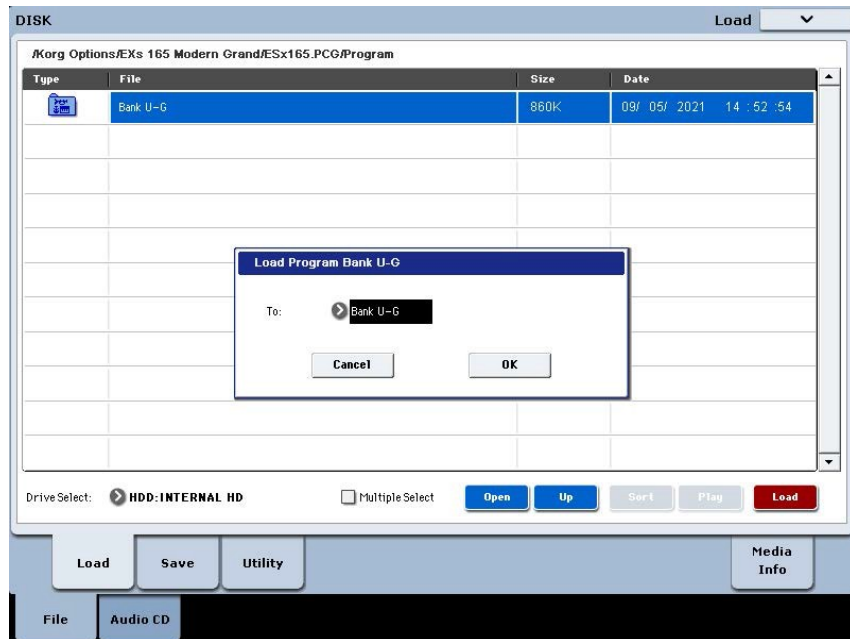


4. Press OK.

The Programs will be loaded into the selected bank.

⚠ If you select U-AA through U-GG as the To parameter do the following:

- a. Go to the Disk Load page.
- b. Select the file EXs165.PCG.
- c. Press the Open button.
- d. Press the Open button.
- e. Press the Load button.
- f. In the To parameter, select the Program bank to overwrite.



- g. Press OK.

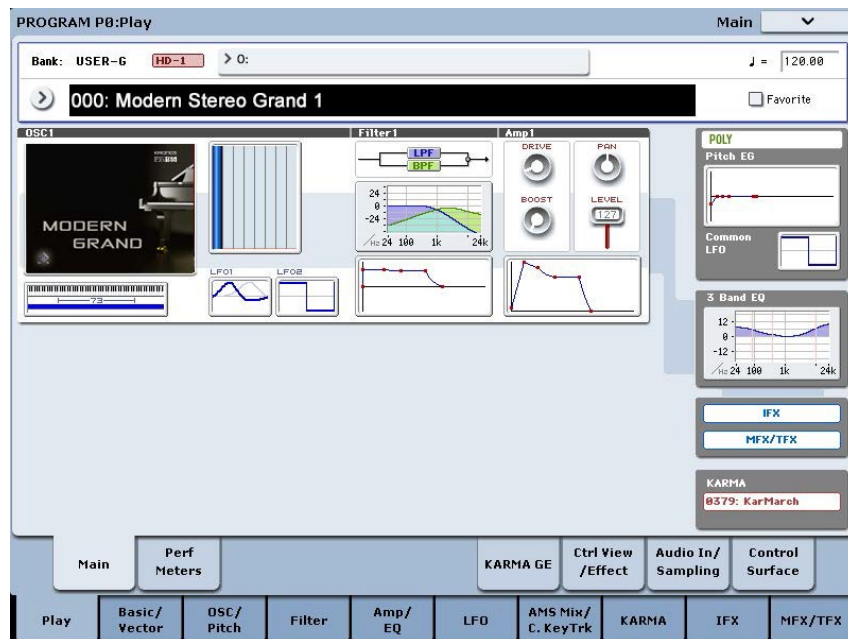
Selecting the new EXs165 sounds

Programs

1. Press the PROG button to enter the desired mode.
2. Press the Bank U-G button to select the new bank.

Alternatively, if you loaded into a different bank, press the appropriate Bank button.

3. Use the VALUE inc/dec buttons, the VALUE dial, or the on-screen Select popup to browse through the new sounds.



EXs165 Programs require no factory preload sounds

Purchasing and authorizing EXs165

EXs165 will work in demo mode, fading in and out, until an authorization code is purchased and entered into the KRONOS. To do so:

1. Go to the Global P6: Options Info page.
2. Write down the Public ID, as shown at the top of the display.

Make sure that you've copied it accurately.

3. If you have access to the internet, follow the instructions under "Purchasing option licenses via the internet," below.
or:
If you do not have internet access, follow the instructions under "Purchasing option licenses from your Korg distributor," below.

Purchasing option licenses via the internet

1. Go to <https://shop.korg.com/kronosSoundLibraries>
2. Under the Korg tab, add EXs165 to your cart.
3. When requested, log in to your account.

If you don't already have an account, follow the online instructions to create one. After creating your account, register your KRONOS.

4. Purchase the authorization code for EXs165.
5. After purchasing, you'll receive your authorization code. Note that this code is tied to your Public ID, and will not work on other KRONOS systems.

If you have more than one KRONOS, you'll need to purchase authorizations for each one separately.

6. Once you have the authorization code, follow the instructions under "Authorizing options on the KRONOS," below.

Purchasing option licenses from your Korg distributor

If you do not have access to the internet, your national Korg distributor will be happy to assist you in purchasing option authorization codes.

1. Contact your Korg distributor, and ask them for assistance with purchasing option authorizations for the KRONOS.

You can find contact information for your Korg distributor by contacting your Korg dealer, or from the following page on the Korg website:

<http://www.korg.com/corporate/distributors>

2. After you purchase the authorization code(s), proceed to "Authorizing options on the KRONOS," below.

Authorizing options on the KRONOS

1. Go to the Global P6: Options Info page.
2. Select the option to authorize from the list of Installed Options.
3. Press the Authorize Selected button.

The Authorize Selected window will appear.

4. Enter the authorization code.

You'll see the name of the selected option or option bundle at the top of the window. The window also includes an onscreen keyboard, so that you can enter your authorization code.

5. Press OK.

Provided that you entered a valid authorization code, the list will now show the option or option bundle as Authorized, and the audio limitations of Demo mode will be removed.

Support

If you have any questions about the KRONOS Sound Libraries, please contact your national Korg distributor.

You can find contact information for all Korg distributors, world-wide, on the Korg website: <http://www.korg.com/corporate/distributors/>

Voice Name List

Programs Bank USER-G [HD-1]

| # | Name | Category | Sub Category |
|-----|-----------------------|----------|--------------|
| 000 | ModernStereoGrand1 | 0 | 0 |
| 001 | ModernStereoGrand2 | 0 | 0 |
| 002 | ModernStereoGrand3 | 0 | 0 |
| 003 | ModernStereoGrand4 | 0 | 0 |
| 004 | ModernStereoGrand5 | 0 | 0 |
| 005 | ModernStereoGrand6 | 0 | 0 |
| 006 | ModernStereoGrand7 | 0 | 0 |
| 007 | ModernStereoGrand8 | 0 | 0 |
| 008 | ModernStereoGrand9 | 0 | 0 |
| 009 | ModernStereoGrand10 | 0 | 0 |
| 010 | ModernStereoGrand11 | 0 | 0 |
| 011 | CinematicStereoGrand | 0 | 0 |
| 012 | NaturalStereoGrand | 0 | 0 |
| 013 | OctaveStereoGrand | 0 | 0 |
| 014 | OctaveStereoGrandDry | 0 | 0 |
| 015 | NaturalStereoGrandDry | 0 | 0 |



KARO Sound Development

Kurt Ader & Oliver Rehn, Wallstadter Strasse 64, D-68259 Mannheim, GERMANY © 2021