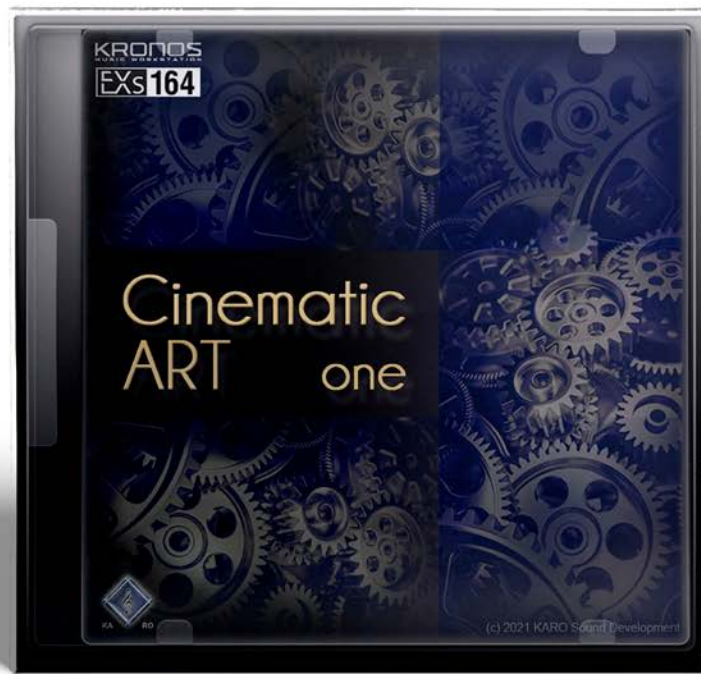


KRONOS Sound Libraries EXs Expansion Samples



Owner's Manual



KARO Sound Development

EXs 164 KARO Cinematic Art one

Thank you for purchasing EXs164 Cinematic ART one for the Korg KRONOS.

Contents: Approximately 1.1 GB of PCM samples, 36 Stereo Multisamples, 128 Programs

The KARO Cinematic Art one contains a wide range of "atmos, pads and ambient samples"

By combining these sounds you are able to produce a variety of film scores such as ambient, atmospheres and unique textures.

EXs164 will be useful anywhere that you need extraordinary sounding textures that cover a wide range of different genres.

This owner's manual explains how to install EXs164 on the KRONOS, how to load the samples, Programs and how to purchase an authorization code and authorize the library.

System requirements

To install EXs164, you'll need:

- KRONOS system version 3.0.4 or later
- Approximately 1.1 GB or more space on the internal disk

To load the sounds into memory, you'll need:

- Approximately 81 MB free RAM

3 GB of RAM recommended

KRONOS: The KRONOS is shipped from the factory with 2GB of memory. It is possible to load just EXs164 with the standard 2GB, but if you want to simultaneously use other EXs options in addition to the preload sounds, we recommend 3 GB of memory. Additional RAM should be installed by authorized Korg service centers only; for more information, see "Installing additional RAM" in the Sampling chapter of the Operation Guide.

KRONOS X: The KRONOS X is shipped from the factory with 3 GB of memory. It is not necessary to add more memory.

To confirm the amount of installed RAM:

- 1. Press the GLOBAL button to enter the Global mode.**
- 2. Go to the Options Info page.**
 - The amount of installed RAM is shown by the Memory parameter at the top-right of the display, in the System section.

Demo mode

Initially, EXs164 will be in demo mode. You'll be able to play, edit, and save Programs which use EXs164.

— but until you purchase an authorization code, their sound will fade out periodically. To purchase an authorization code, go to the online shop at <https://shop.korg.com/kronos/KARO>. For more information, see "Purchasing and authorizing EXs164" on page 12.

Preparations before installing

To install EXs164, you'll need KRONOS system version 3.0.4 or later, and at least 1.1 GB of free space on the internal disk.

To check the version of your KRONOS software:

1. Press the front panel GLOBAL button to enter Global mode.
2. Go to the Options Info page.

The version number is shown under "System" in the upper right-hand corner of the display.

3. Confirm that the version is 3.0.4 or later. If not, go to <https://shop.korg.com/kronosSupport> and download and install the latest system software.

To check the amount of free space on the internal disk:

1. Press the front panel DISK button to enter Disk mode.
2. Go to the Media Info page.
3. Set the Drive Select parameter to HDD: INTERNAL HD.
4. Confirm that the Free Size 1.1 (GB) or more. If not, please free up space on the disk by removing unnecessary data.

You can remove unwanted files from the disk by using the Utility page's Delete menu command. If you want to keep the files for your archives, you can use the Copy menu command to save them to an external USB storage device.

Installing EXs164

1. Un-zip the downloaded file.

Un-zipping the archive will result in a folder containing several different files and a sub-folder, as shown below.

EXs164 folder contents

| File/folder name | Notes |
|------------------|---------------------------------------------------------------------------------------------------------------------------------------------|
| EXs164.exsins | These are data files used by the installer. |
| S164 | |
| EXs164.tar.gz | |
| EXs164.PCG | These files contain the Programs, (PCG). All of these are included in the installer, but are also provided separately for your convenience. |
| Manuals | This folder includes the manual that you're reading now, in English verion: EXs164_OM_E1.PDF |

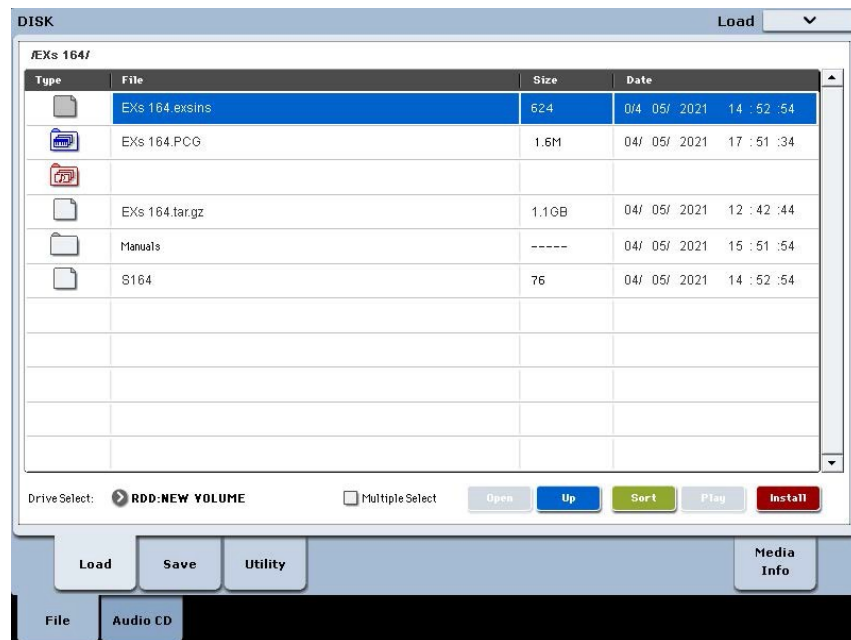
2. Copy the un-zipped EXs164 folder to a USB storage device, such as flash memory or a USB hard drive.
3. Safely disconnect the USB storage device from your computer.
4. Connect the USB storage device to one of the KRONOS's two USB A ports.

5. Press the DISK button to enter Disk mode.
6. Go to the Disk Utility page.
7. Using the Drive Select menu at the bottom of the page, select the USB storage device.

You may need to wait a few seconds after connecting the device before it is recognized.

8. Open the folder containing the EXs data from step 2.
9. Select the file EXs164.exsins.

The “exsins” suffix stands for “EXs INStaller.”



When an .exsins file is selected, the **Load** button changes to read **Install**. Only one EXs can be installed at a time. If **Multiple Select** is On, **Install** will be disabled.

10. Select **Install EXs** from the menu, or press the **Install** button.

The system will check to confirm that the installation files are valid, and that there is sufficient space on the SSD to install the EXs. Next, a dialog box will appear:



Found installer for: [EXs name]

Space required: [nnn] MB

SSD1: [disk name] [nnn] GB available

11. Press Install to continue with the installation.

The confirmation message “Are you sure?” will appear.

If you decide to cancel the installation, press the **Cancel** button.

12. Press OK to continue with the installation.

The installation will then begin. This may take a while; a progress bar shows the installation as it proceeds.

Next, the newly installed files will be verified. After the verification has completed successfully, the progress bar will disappear, and the installation is complete. The EXs sample data itself is installed on an invisible, protected part of the disk. To use the EXs, you’ll load its associated files, which will be installed into a new folder named EXs164 Cinematic ART one within the KARO Options folder, as shown below.

EXs164 Cinematic ART one folder contents

| File/folder name | Notes |
|------------------|----------------------------------------------------------------------------------------------|
| EXs164.KSC | This is the KARO Sample Collection file, which lets you load all of the new samples at once. |
| EXs164.PCG | This file contains the new Programs. |

Note: EXs164.PCG is also included in the unzipped EXs164.zip file. There are identical to the installed EXs164.PCG. Use them as backups.

Error messages

When installing, error messages may be displayed to indicate problems, as described below.

“Error: invalid option file”

This means that the installation data is corrupted. Copy the file to the USB media again, or if that fails, download the data again.

“Error: not enough disk space for the installation”

This means that the internal disk is too full. Remove data from the disk, backing it up to USB media, in order to free up space.

Loading the new sounds and samples

- ⚠ Before loading, make sure to back up important data onto the internal disk or a USB storage device. When you load these files into memory, data previously stored in those locations will be overwritten.

Default load locations

By default, the Programs will be loaded into the following locations:

- Programs: U-G (HD-1) 000...127

If desired, they can be loaded into different locations as well.

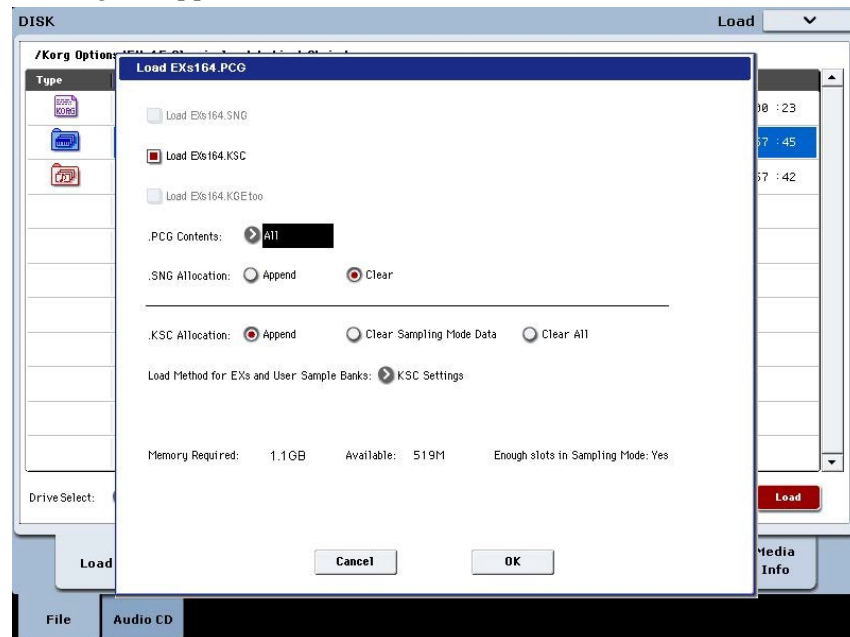
Loading the new sounds and samples

You can load the Programs and Samples into the default locations all at once.

To do so:

1. Go to the Disk Load page.
2. Set Drive Select to HDD: INTERNAL HD.
3. Select the KARO Options folder, and press Open.
4. Select the EXs164 Cinematic ART one folder, and press Open.
5. Select the file EXs164.PCG.
6. Press the Load button.

A dialog box appears.



7. Enable the check-box labeled Load EXs164.KSC. too.

This will load the samples along with the Programs.

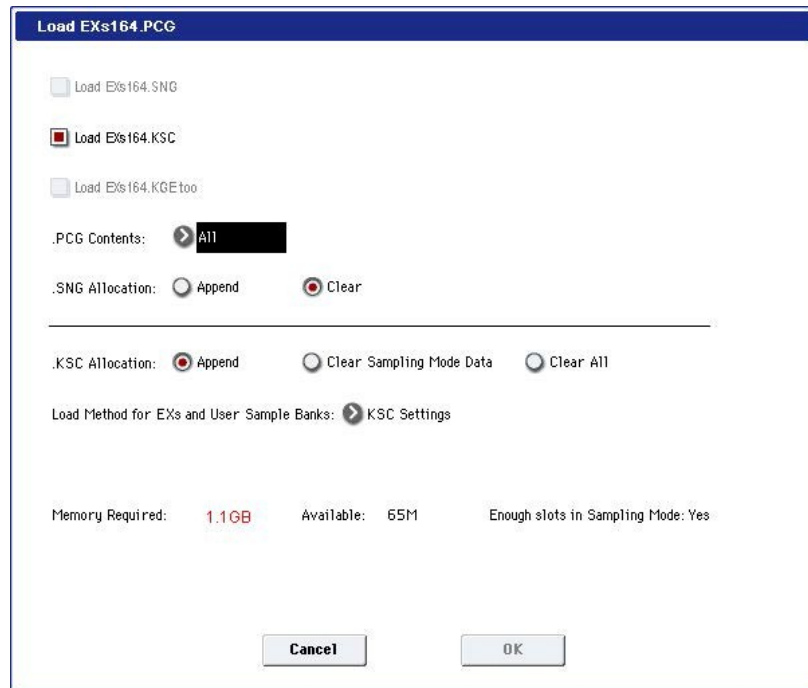
8. Set Select **.KSC Allocation** to **Append**, and **Load Method** to **KSC Setting**.

9. Leave the **.PCG Contents** parameter set to **All**.

Below the other parameters, you'll notice a status line showing the Memory Required and Available. (There's also info about whether or not there are enough slots, but this applies to RAM samples only.)

If the Available value is larger than Memory Required, the text will be in black, and you can proceed.

If the Available value is smaller than Memory Required, it will be shown in red characters. You can free up memory in several different ways; for more information, see "Making room in memory to load EXs164," below.



10. Press **OK** to load the data.

EXs164 will work in demo mode, fading in and out, until an authorization code is purchased and entered into the KRONOS. For more information, see "Purchasing and authorizing EXs164," below.

Making room in memory to load EXs164

If you've loaded additional EXs or Sampling Mode samples, there may not be enough space to load EXs164 at the same time.

To clear all Sampling Mode samples from within the Load dialog, you can set **Select .KSC Allocation** to **Clear Sampling Mode Data**. This will un-load all Sampling Mode samples, while leaving all EXs samples intact. Make sure that you've saved any edited Sampling Mode samples before doing this!

Alternatively, you can press the Cancel button and make more detailed changes to the loaded samples. For instance, you can go to the Global P0: Basic Setup-Sample Management page to un-load specific Sampling Mode or EXs samples.

Finally, you can revert back to the factory settings by doing the following:

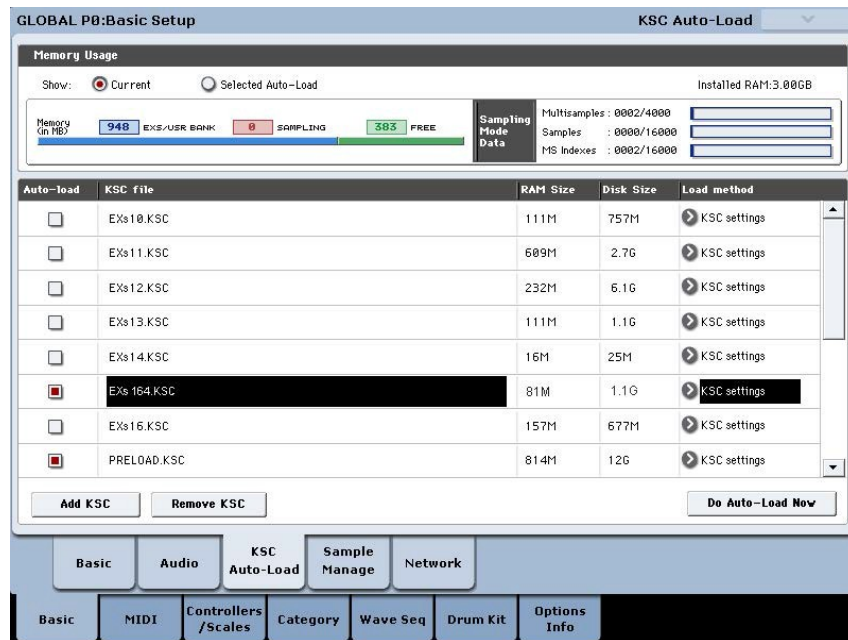
1. Go to the **Global P0: Basic Setup-KSC Auto-Load** page.
2. **Un-check the Auto-Load buttons for all KSCs except for PRELOAD.KSC.**
3. **Press the Do Auto-Load Now button.**

This will first un-load all Sampling Mode and EXs samples, and then revert back to the factory settings.

Automatically loading the EXs164 samples at startup

If you like, you can configure the KRONOS to automatically load the EXs164 samples at startup. To do so:

1. Press the GLOBAL button to enter Global mode.
2. Go to the Global Basic-KSC Auto-Load page.
3. In the list of KSCs, check the Auto-load box next to EXs164.KSC.

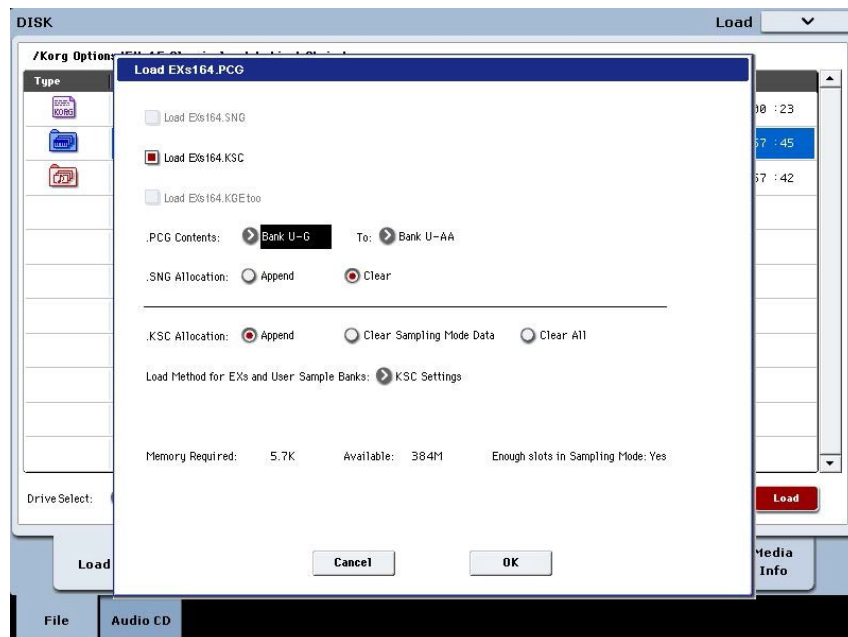


Loading the Programs into a different bank

1. Follow steps 1–10 under “Loading the new sounds and samples,” above.
2. Set the .PCG Contents parameter to Bank U-G.

To the right of this parameter, the To parameter will appear.

3. In the To parameter, select the bank to overwrite.

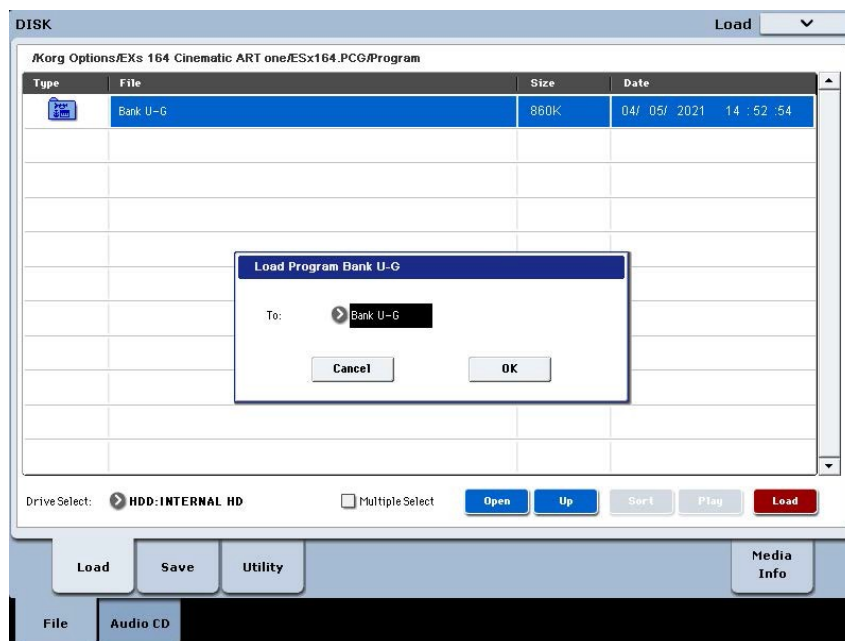


4. Press OK.

The Programs will be loaded into the selected bank.

⚠ If you select U-AA through U-GG as the To parameter do the following:

- a. Go to the Disk Load page.
- b. Select the file EXs164.PCG.
- c. Press the Open button.
- d. Press the Open button.
- e. Press the Load button.
- f. In the To parameter, select the Program bank to overwrite.



- g. Press OK.

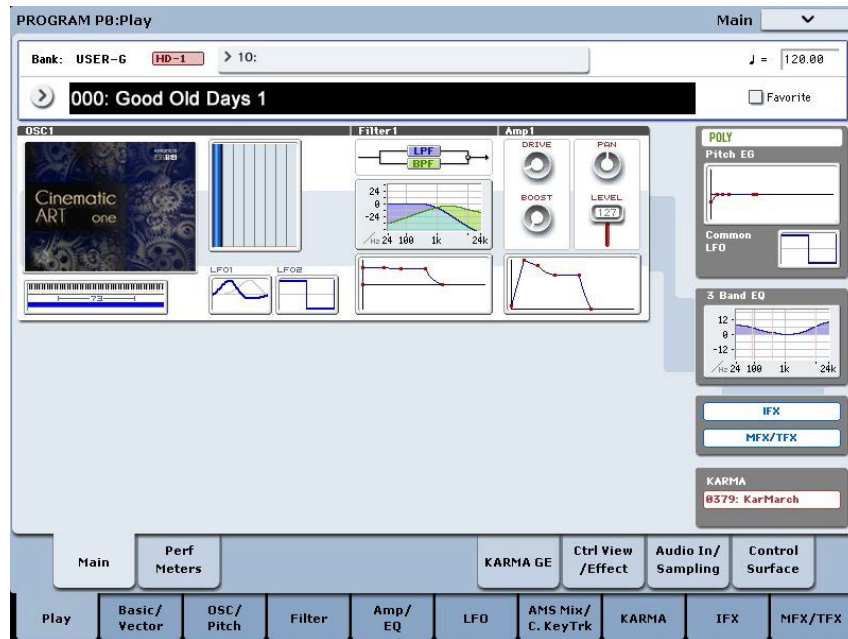
Selecting the new EXs164 sounds

Programs

1. Press the PROG button to enter the desired mode.
2. Press the Bank U-G button to select the new bank.

Alternatively, if you loaded into a different bank, press the appropriate Bank button.

3. Use the VALUE inc/dec buttons, the VALUE dial, or the on-screen Select popup to browse through the new sounds.



EXs164 Programs require no factory preload sounds

Purchasing and authorizing EXs164

EXs164 will work in demo mode, fading in and out, until an authorization code is purchased and entered into the KRONOS. To do so:

1. Go to the Global P6: Options Info page.
2. Write down the Public ID, as shown at the top of the display.

Make sure that you've copied it accurately.

3. If you have access to the internet, follow the instructions under "Purchasing option licenses via the internet," below.
or:
If you do not have internet access, follow the instructions under "Purchasing option licenses from your Korg distributor," below.

Purchasing option licenses via the internet

1. Go to <https://shop.korg.com/kronosSoundLibraries>
2. Under the Korg tab, add EXs164 to your cart.
3. When requested, log in to your account.

If you don't already have an account, follow the online instructions to create one. After creating your account, register your KRONOS.

4. Purchase the authorization code for EXs164.
5. After purchasing, you'll receive your authorization code. Note that this code is tied to your Public ID, and will not work on other KRONOS systems.

If you have more than one KRONOS, you'll need to purchase authorizations for each one separately.

6. Once you have the authorization code, follow the instructions under "Authorizing options on the KRONOS," below.

Purchasing option licenses from your Korg distributor

If you do not have access to the internet, your national Korg distributor will be happy to assist you in purchasing option authorization codes.

1. Contact your Korg distributor, and ask them for assistance with purchasing option authorizations for the KRONOS.

You can find contact information for your Korg distributor by contacting your Korg dealer, or from the following page on the Korg website:

<http://www.korg.com/corporate/distributors>

2. After you purchase the authorization code(s), proceed to "Authorizing options on the KRONOS," below.

Authorizing options on the KRONOS

1. Go to the Global P6: Options Info page.
2. Select the option to authorize from the list of Installed Options.
3. Press the Authorize Selected button.

The Authorize Selected window will appear.

4. Enter the authorization code.

You'll see the name of the selected option or option bundle at the top of the window. The window also includes an onscreen keyboard, so that you can enter your authorization code.

5. Press OK.

Provided that you entered a valid authorization code, the list will now show the option or option bundle as Authorized, and the audio limitations of Demo mode will be removed.

Support

If you have any questions about the KRONOS Sound Libraries, please contact your national Korg distributor.

You can find contact information for all Korg distributors, world-wide, on the Korg website: <http://www.korg.com/corporate/distributors/>

Voice Name List

Programs Bank USER-G [HD-1]

| # | Name | Category | Sub Category |
|-----|--------------------------|----------|--------------|
| 000 | Good Old Days 1 | 10 | 1 |
| 001 | Good Old Days 2 | 10 | 1 |
| 002 | Metamorphosis 1 | 12 | 0 |
| 003 | Metamorphosis 2 | 12 | 0 |
| 004 | Perpetual Motion 1 | 12 | 0 |
| 005 | Perpetual Motion 2 | 12 | 0 |
| 006 | Distant Narrow | 9 | 1 |
| 007 | Bright Narrow | 9 | 0 |
| 008 | Cosmic Evil | 12 | 0 |
| 009 | Utopia Piano Motion | 12 | 0 |
| 010 | Scrolling Sampling ART | 13 | 1 |
| 011 | Portamento Space SW1 | 12 | 0 |
| 012 | Attack Lead Synth | 10 | 1 |
| 013 | Cinema ART Piano | 12 | 0 |
| 014 | Motion Elementals JS-Y | 12 | 0 |
| 015 | Incoming LFO Morph JS-Y | 12 | 1 |
| 016 | Caution ART Morphine | 12 | 0 |
| 017 | Deep Belower | 12 | 0 |
| 018 | Disrupt Drone Morph JS+Y | 12 | 0 |
| 019 | Cinematic Split ART | 12 | 1 |
| 020 | Absent Heaven | 12 | 0 |
| 021 | Chordal Skyway | 12 | 0 |
| 022 | Heaven Can Wait | 12 | 0 |
| 023 | Motion Ghost Ripples | 12 | 0 |
| 024 | ART Of Bells | 10 | 1 |
| 025 | Clean Sparkle Synth | 10 | 0 |
| 026 | Suspense Dreaming Bells | 12 | 0 |
| 027 | Early Beginnings | 10 | 1 |
| 028 | Anthology Dreams | 9 | 1 |
| 029 | ART Of Sweep | 12 | 0 |
| 030 | Hide And Seek | 12 | 0 |
| 031 | Isolation Motion | 12 | 0 |
| 032 | Moving Glass Pad | 12 | 0 |
| 033 | Synthesia 1 | 12 | 0 |
| 034 | Synthesia 2 | 12 | 0 |
| 035 | Motional Pianophonics | 12 | 0 |
| 036 | Cinematic ART | 12 | 0 |
| 037 | Space Choir | 12 | 0 |
| 038 | ART Of Drone | 12 | 0 |
| 039 | Empire Evolution | 12 | 0 |
| 040 | Airy Tails | 9 | 0 |
| 041 | Metal Sweep Pad | 9 | 0 |
| 042 | Metal Hemispheres | 12 | 0 |
| 043 | Slow Metal Pad | 9 | 0 |
| 044 | Slow Dynamic Pad 1 | 9 | 0 |
| 045 | Slow Dynamic Pad 2 | 9 | 0 |
| 046 | Slow Dynamic Pad 3 | 9 | 0 |
| 047 | Analogue Paddy | 9 | 1 |
| 048 | Slow DW-Ohhs Choir | 9 | 0 |
| 049 | Dark Morph Pad | 12 | 0 |
| 050 | Slow Synth Pad | 9 | 0 |
| 051 | Movie Voice Theme | 9 | 2 |
| 052 | DW Hybrid Pad | 9 | 0 |
| 053 | Innocent Pad | 9 | 0 |
| 054 | Dark Sweeper | 9 | 1 |
| 055 | Orchestra Morph Hit | 14 | 1 |
| 056 | Organized | 12 | 0 |
| 057 | Transformation | 9 | 2 |
| 058 | Suspense Piano Pad | 12 | 0 |
| 059 | Slow Emotion | 9 | 2 |
| 060 | Against Off Morph | 12 | 2 |
| 061 | Spectral Eye | 10 | 0 |
| 062 | Rhythmic Motion Split | 12 | 1 |
| 063 | Endless Morpiano | 12 | 0 |

| # | Name | Category | Sub Category |
|-----|----------------------|----------|--------------|
| 064 | Kronophobia 1 | 12 | 0 |
| 065 | Kronophobia 2 | 12 | 0 |
| 066 | Grateful Pad | 12 | 0 |
| 067 | Practice Pad | 12 | 0 |
| 068 | State Of Wave | 12 | 0 |
| 069 | Digi Layer | 12 | 0 |
| 070 | Journey Motion | 12 | 0 |
| 071 | Future Tense | 12 | 0 |
| 072 | Phoenix Synth | 12 | 0 |
| 073 | Achromatic W-State | 12 | 0 |
| 074 | The Struggle | 12 | 0 |
| 075 | Find Myself | 12 | 0 |
| 076 | Drowning Swell | 12 | 0 |
| 077 | Stroke Piano | 10 | 1 |
| 078 | Gone Fantasies | 10 | 1 |
| 079 | Synth Guitar Lead | 11 | 1 |
| 080 | Classical Layer | 10 | 0 |
| 081 | DW Synth Piano | 10 | 0 |
| 082 | Fast & Motion | 12 | 0 |
| 083 | Native Motion | 12 | 0 |
| 084 | Glass Bell Pad | 10 | 1 |
| 085 | Uranos Motion | 12 | 0 |
| 086 | Atmospheric Drone | 12 | 0 |
| 087 | Morphologic 1 | 9 | 1 |
| 088 | Morphologic 2 | 12 | 0 |
| 089 | Low Strings | 12 | 0 |
| 090 | Motion Pan | 12 | 0 |
| 091 | Move Your JS | 12 | 0 |
| 092 | Power Synth 1 | 10 | 0 |
| 093 | Power Synth 2 | 10 | 0 |
| 094 | KARMA Gliss Down | 12 | 1 |
| 095 | Slow Motion Pad | 12 | 0 |
| 096 | Spiral Lights | 12 | 0 |
| 097 | VJS Motion | 13 | 1 |
| 098 | Dream Of ART | 10 | 1 |
| 099 | Reverse Pad | 12 | 0 |
| 100 | Distant Poly Lead | 10 | 0 |
| 101 | Scored Motion | 12 | 0 |
| 102 | Revers Scrolling JS | 13 | 1 |
| 103 | Vector Morph SW1 | 12 | 0 |
| 104 | Motion Piano | 12 | 0 |
| 105 | Digi Morphing 1 | 12 | 1 |
| 106 | Digi Morphing 2 | 12 | 1 |
| 107 | Swell Pad | 9 | 2 |
| 108 | Slow Phase | 9 | 2 |
| 109 | Alternative Pad | 12 | 0 |
| 110 | Mephisto Pad | 12 | 0 |
| 111 | Suspense Drone | 12 | 0 |
| 112 | DW Synth Layer | 10 | 0 |
| 113 | Slow & Bright | 9 | 0 |
| 114 | Morph Metal To Choir | 12 | 0 |
| 115 | High Sweep Morph | 9 | 0 |
| 116 | Modern Dreams | 9 | 1 |
| 117 | Atmo Move | 12 | 0 |
| 118 | Moody Sweeper | 9 | 1 |
| 119 | Vanishing VCF Pad | 12 | 0 |
| 120 | Vox Pad | 12 | 1 |
| 121 | Astral Motion | 12 | 0 |
| 122 | Goa Sweeper | 9 | 2 |
| 123 | Panning Phazor JS-Y | 9 | 2 |
| 124 | Into The Cloud | 12 | 0 |
| 125 | Supreme Strings 1 | 9 | 1 |
| 126 | Supreme Strings 2 | 9 | 1 |
| 127 | Slow Voyage | 9 | 1 |



KARO Sound Development

Kurt Ader & Oliver Rehn, Wallstadter Strasse 64, D-68259 Mannheim, GERMANY © 2021